

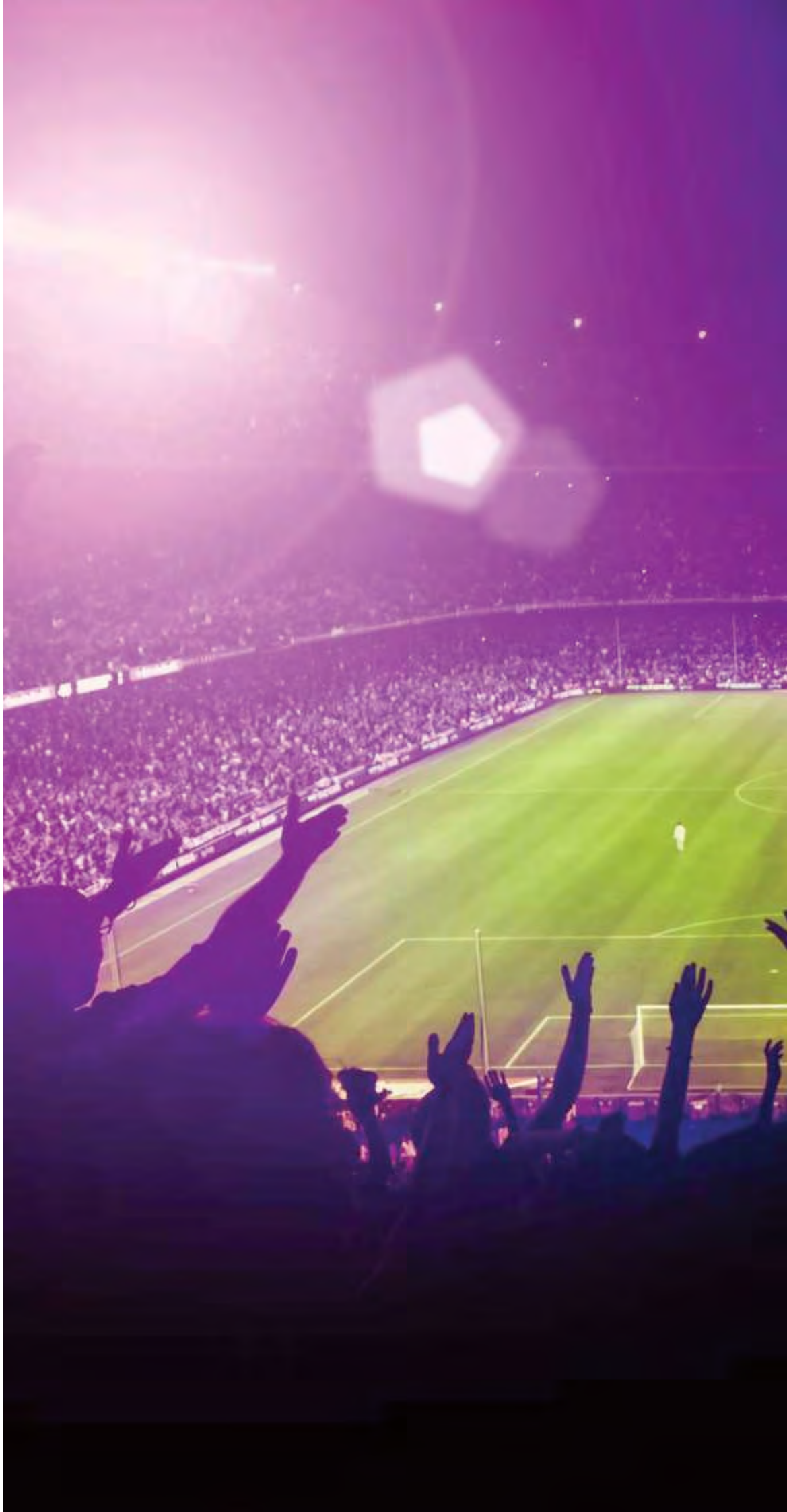
VENUES & EVENTS

# DESIGNAGE



ARCHITECTURE | INTERIORS | PMC

# SPORTS INFRASTRUCTURE DESIGNED FOR PERFORMANCE







Sports infrastructure, by its sheer scale and public attention, is often expected to set the style or tone for their surroundings and reflect aspects of the history or culture of their location. Having worked closely with many individual sports clubs, community groups, institutions, national Sports organizations and Sports Councils, we understand sports projects require specific knowledge and experience different from typical commercial buildings and have a unique need to connect multi-groups for a shared project vision.

In this age of intense public scrutiny, challenging fiscal environments and social media driven visibility, the need for cities and governments to translate winning bids for hosting large sporting events into successful Games and lasting Legacies has never been more fundamental to the credibility of the organising city. Working on Major National and International Events, with services ranging from feasibility studies through to bid, delivery and legacy, we are ensuring that the events help cities transform themselves, regenerating districts, boost local economies and improve connectivity.

### **Infrastructure**

Architecture & Engineering  
Sports Program Requirements  
Establishing Seating capacities and sightlines  
Technical Program Requirements for Media, Broadcast & Players  
Compliance with Sports Bodies  
Technical Specification for Sporting surfaces and equipment  
Existing Sports Infrastructure Audit for upgradation to comply with standards

### **Project Management**

Finance  
Funding for Capital Expenditure  
Operational Expenditure  
Risk Mitigation and Long term sustainability

### **Branding**

Stadium Graphics & Way Finding  
Games Mascot & Logo Medals

### **Operation**

Host city bidding  
Event Operations  
Safety & Security strategy Energy plan  
Logistics planning

### **Event Ceremonies & Production**

# LEADING WITH EXPERTISE



We share and develop ideas to ensure futureproof, responsible architecture. It is the expertise of our team, their experiences and knowledge in designing that have earned us strength and recognition over the past decade. We are experts in creating awareness, and our enthusiasm for innovation has kept us at par with the leading architects of the world.

## CRAFTING DYNAMISM

Collage Oesign was founded in 1996 in Mumbai, and has been growing steadily ever since.

Our work encompasses a wide spectrum of project types.

### RAISING ASPIRATIONS WITH INNOVATION

We immensely value our clients, fellow consultants, contractors and suppliers. It has been our foremost priority to maintain a healthy ongoing dialogue and develop close working relationships. Together we have helped our clients realize their aspirations with surprisingly affordable designs. We seek to arrive at simple yet rich solutions in an unpretentious and contemporary manner.

- ARCHITECTURE
- INTERIORS
- ENGINEERING
- LANDSCAPE DESIGN
- INTERIOR DESIGN
- PROJECT MANAGEMENT
- COST CONSULTING
- FEASIBILITY STUDIES
- PROGRAM MANAGEMENT
- EPC

- MASTER PLANNING
- SPORTS & EVENTS
- RESIDENTIAL
- COMMERCIAL
- INSTITUTIONAL
- INFRASTRUCTURE
- RESEARCH
- INDUSTRIAL
- INTERIORS
- RETAIL

# PROJECT LIST

PROPOSALS, ONGOING & COMPLETED WORKS

## ● SPORTS & EVENTS

International Cricket Stadium, Dehradun

Karyavattom International Stadium, Kerala

International Stadium & Sports Complex, Haldwani

International Cricket Stadium, Maldives

International Cricket Stadium, Baroda

International Cricket Stadium Ghaziabad

Fifa U-17 World Cup 2017, India

2020 Fifa U-17 Women's World Cup, India

National Centre Of Excellence, Kolkata

Integrated Sports Complex Dwarka, New Delhi

Campal Football Stadium Goa

Infrastructure For Sports Authority Of India

36th National Games Goa

38th National Games Uttarakhand

38th National Games Meghalaya

Rangasala Stadium Pokhara, Nepal

Disability Sports Centre Gwalior

Disability Sports Centre Shillong

Karyavattom Convention & Club House, Kerala

Rtsvm International Sports Complex, Navi Mumbai

Campus Masterplan Mpssc, Dehradun

Sandip Foundation Sports Complex, Nashik

Bhabanipur Sports School Sundergarh, Odisha

Redevelopment Of Kalinga Sports Complex, Odisha

Curchorem Sports Complex Goa

Multi Sports Complex Jabalpur

Sushant Zonal Sports Complex, Golf City, Lucknow

District Sports Complex Haldwani, Uttarakhand

District Sports Complex Sundergarh, Odisha

Randhir Prasad Verma Stadium, Dhanbad

Indoor Shooting Range Dehradun

Parade Ground Sports Complex, Dehradun

Igmc Stadium Vijayawada

Badda Dada Sports Complex, Jabalpur

Indian Cricket League

Chowgule Sports Centre, Goa



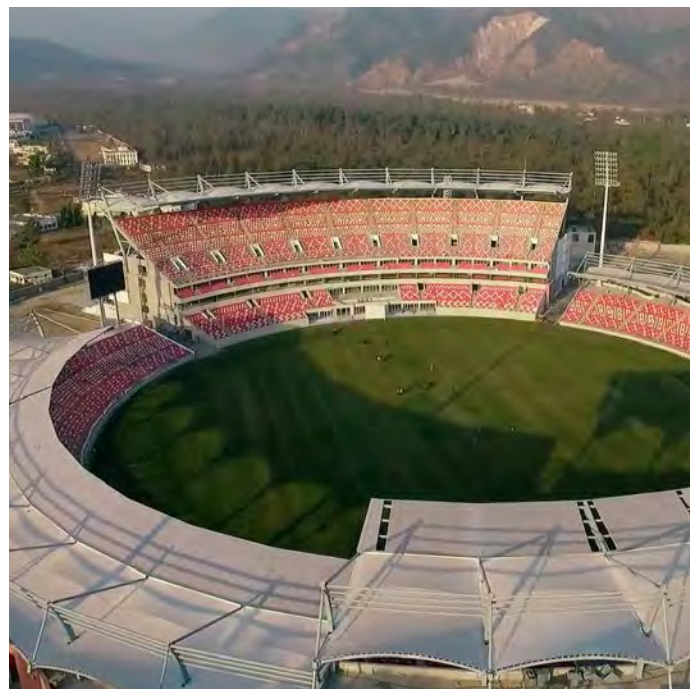


## INTERNATIONAL CRICKET STADIUM, DEHRADUN

<b>Client</b>	R.G.I.C.S (Govt. of Uttarakhand)
<b>Site Area</b>	25 Acres
<b>Development Area</b>	350,000 Sft.
<b>Seating Capacity</b>	25000
<b>Status</b>	Completed – May 2018
<b>Project Cost</b>	INR 240 Cr
<b>Scope</b>	Masterplanning & Programming, Architecture & Engineering, Project Management Consultancy, Transaction Advisory

As the venue for 38th National Games, this Iconic Stadium, meeting LEED Gold standards, will provide a world-class facility for 25000 spectators during the opening ceremony and closing ceremony. Reflecting Dehradun's culture and heritage, the stadium is designed to blend with the picturesque landscape of the region. Set against the backdrop of rolling hills and rivers, the intimate bowl provides uninterrupted views of the Field of Play. Triple height atriums, bars and restaurants, corporate suites and lounges provide the spectators with a new viewing experience of the game. The club house complex with its allied facilities of guest rooms, restaurants, banquet halls, auditorium, bowling alley and indoor sports facility will make this the new destination in the city and region.

SPORTS







## KARYAVATTOM INTERNATIONAL STADIUM, KERALA

<b>Client</b>	CCCL, Chennai (for ILFS / Govt. of Kerala)
<b>Site Area</b>	33 Acres
<b>Development Area</b>	650,000 Sft.
<b>Seating Capacity</b>	50000
<b>Status</b>	Completed – Feb 2016
<b>Project Cost</b>	INR 292 Cr.
<b>Scope</b>	Detailed Project Report Masterplanning & Programming Architecture & Engineering

SPORTS

Launched as India's first Private-Public Stadium, the stadium has been awarded the prestigious David Vickers Award – New Venue of Year 2015. Working closely with the clients, the stadium has been designed to meet the standards of ICC & FIFA for hosting international events. The outdoor stadium offers seating for 50,000 seats with private suite boxes and VIP business seats for both cricket and football. The design of the stadium venue reflects local architectural influences, recalling a proud past while serving as a bridge to a modern era. Media, broadcast and operation facilities have been integrated into the design. The facility has state-of-the-art amenities including restaurants, retail, banquet halls and conference rooms to provide a year around destination.







## INTERNATIONAL STADIUM & SPORTS COMPLEX, HALDWANI

<b>Client</b>	I.G.I.S.C.S. (Govt. of Uttarakhand)
<b>Site Area</b>	72 Acres
<b>Development Area</b>	300,000 Sft.
<b>Seating Capacity</b>	15000
<b>Status</b>	Completed – Dec 2016
<b>Project Cost</b>	INR 193 Cr.
<b>Scope</b>	Detailed Project Report Masterplanning & Programming Architecture & Engineering Project Management Consultancy

SPORTS / MASTERPLANNING

Inspired by the rivers and the natural beauty of the region, the Masterplan has been developed to allow for the individual sporting venues to be aligned along the Gola Riverfront. The design of the 72 acres site includes: a 10,000 seat cricket stadium, a 5,000 seat athletic and football stadium, a 2,500 seat indoor sports complex and swimming pool along with 15 acres of plazas and public space. The cricket stadium is oriented for the pavilion and the seating faces the picturesque mountains of Nainital and the city of Haldwani. The exterior of the outdoor stadiums have been articulated with a series of colored fabric. Attached to the structural system for the roof, each panel floats along the whole perimeter of the stadium creating a unique sense of place in this venue.







## INTERNATIONAL CRICKET STADIUM, MALDIVES

<b>Client</b>	Housing Develent Corporation (Govt. of Maldives)
<b>Site Area</b>	25 Acres
<b>Development Area</b>	350,000 Sft.
<b>Seating Capacity</b>	20000
<b>Status</b>	Completed – Jan 2020
<b>Project Cost</b>	INR 305 Cr. (Estimated)
<b>Scope</b>	Detailed Project Report Masterplanning & Programming Architecture & Engineering

SPORTS

The Govt. of Maldives, in coordination with the Indian Government through EXIM bank, is developing a State-of-Art Cricket stadium to promote this popular sport in the Island country. Located on the Waterfront, the Masterplan responds to the climate and the development guidelines of the new city of Hulhumale by integrating in to the parks and plazas and allowing for the stadium to act as an extension to the city public areas. The seating bowl is developed to provide uninterrupted views towards the ocean while enjoying the game within the stadium. The roof has been developed as an iconic imagery derived from the national flag and will act as a beacon to the country.







## INTERNATIONAL CRICKET STADIUM, BARODA

<b>Client</b>	ITUAL (for Baroda Cricket Association)
<b>Site Area</b>	47 Acres
<b>Development Area</b>	600,000 Sft.
<b>Seating Capacity</b>	35000
<b>Status</b>	Completed – Feb 2019
<b>Project Cost</b>	INR 250 Cr.
<b>Scope</b>	Detailed Project Report Masterplanning & Programming Concept Design

SPORTS / MASTERPLANNING

Baroda Cricket Association (BCA) has embarked on an ambitious project to establish a new cricket stadium and training academy in the outskirts of the city. The Detailed Project report has been created to understand the technical and financial feasibility of the project. The project has been planned for development in phases to facilitate the cash flow through revenues generated from the commercial facilities and the training centre. The project includes the creation of ICC Compliant stadium with all the modern amenities for players, VIP, media, broadcast and the spectators in addition to residential facilities for the players. A club house complex with indoor and outdoor sports facilities will engage the community and keep the campus active throughout the year.







# INTERNATIONAL CRICKET STADIUM GHAZIABAD

Client	Uttar Pradesh Cricket Association
Lead Consortium Partner	Ecofirst (Tata Consulting Engineers Limited)
Seating Capacity	40000
Project Cost	INR 750 Cr
Status	On-going
Scope	Detailed Project Report Masterplanning & Programming Architecture

SPORTS / MIXED USE / MASTERPLANNING

The proposed stadium shall be comparable in all respects with an international standard sports stadia. Stadium will meet all applicable national codes and standards for development including the guidelines for safety of sports grounds and green/ sustainable development. The Project will be developed as a sports and entertainment precinct that can be used throughout the year by ensuring the stadium integrates with, adjacent civic spaces, residential complex, commercial complex and community facilities. The stadium shall be compliant with ICC guidelines to host national and international Cricket events as well as major concerts, events and ceremonies. The seating shall be as close to the playing field as possible, sightlines shall be optimum and unobstructed for all the sports.







## FIFA U-17 WORLD CUP 2017, INDIA

<b>Client</b>	Local Organizing Committee All India Football Federation Cochin
<b>Site Area</b>	Goa Guwahati Kolkata New Delhi & Mumbai
<b>Status</b>	Completed – Oct 2017
<b>Project Cost</b>	INR 200 Cr.
<b>Scope</b>	Detailed Project Report Masterplanning & Programming Infrastructure Consultancy Project Management Consultancy

SPORTS

Appointed by the Local Organizing Committee of the FIFA Under 17 World Cup India 2017 (LOC) in September 2015 as Infrastructure Consultants, Collage Design worked side by side with the organization in the very critical area of creating all the infrastructure information for the LOC and providing the technical expertise to monitor the development of the same. The Detailed Project Report of all the Venues that hosted the Tournament established the roadmap for the upgradation of all the venues. Each venue met with the international guidelines for Players Amenities, Broadcast Facilities, Sports Lighting, Spectator movement for safety, VIP and Media Facilities







## 2020 FIFA U-17 WOMEN'S WORLD CUP, INDIA

<b>Client</b>	Local Organizing Committee All India Football Federation Ahmedabad, Bhubaneshwar, Guwahati, Kolkata, Mumbai
<b>Project Location</b>	
<b>Status</b>	On-going
<b>Scope</b>	Detailed Project Report Masterplanning & Programming Project Management

MASTERPLANNING / SPORTS

Continuing with our successful work on the 2017 FIFA U-17 Men's WC in India, the team is working closely with the Local Organizing Committee to upgrade and plan the Match Venues and Training Facilities in the 5 cities to match Global standards of hosting International Televised Events. Each venue is carefully studied and Upgradation proposed on various fronts including Players Amenities, Broadcast Facilities, Sports Lighting, Spectator movement for safety, VIP and Media Facilities. Every venue has been developed in close coordination with the Stadium owners to create a lasting legacy of the Games.







# NATIONAL CENTRE OF EXCELLENCE, KOLKATA

Client	All India Football Federation
Site Area	15 Acres
Development Area	250,000 Sft
Project Cost	INR 175 Cr
Status	On-going
Scope	Detailed Project Report Masterplanning & Programming Architecture & Engineering Project Management

The National Centre of Excellence has been undertaken to strengthen and develop the beautiful game in India. The state of the art facility shall be the new home of AIFF national teams across age groups for men and women. The Masterplan includes: High Performance Centre for National Teams, Educational Facilities, Medical Centre of Excellence, Team Hotels, Indoor Futsal Court, Training Fields and Stadium. The design is built in to accommodate the future needs and as such shall have India’s first ever roof top pitch. The various components are interconnected with the aim to provide a home, which has been the backbone of success for World Cup nations, providing the players a sense of belonging, a feeling of national pride.

SPORTS







## INTEGRATED SPORTS COMPLEX DWARKA, NEW DELHI

<b>Client</b>	Delhi Development Authority
<b>Site Area</b>	65 Acres
<b>Project Cost</b>	INR 250 Cr
<b>Seating Capacity</b>	15000
<b>Status</b>	On-going
<b>Scope</b>	Detailed Project Report Masterplanning & Programming Architecture & Engineering Project Management Consultancy

SPORTS / MASTERPLANNING

The 100 Acre Property in the heart of Kanpur is being developed as Mixed Use Township on PPP Model for monetization of Railway Land by RLDA. Extensive studies of the market, economic feasibility and demands resulted in the strategy to develop the Masterplan as an Integrated Mixed Use Township of Plotted development of varying sizes, Group Housing and Commercial Plots to maximize the Land Value. The Smart Township will be sustainable with Central Greens, Avenues and Community Amenities with the Commercial Development along the Main Approach Road. The Group Housing and EWS / LIG Housing are planned as mid-rise towers with uninterrupted views towards the city.





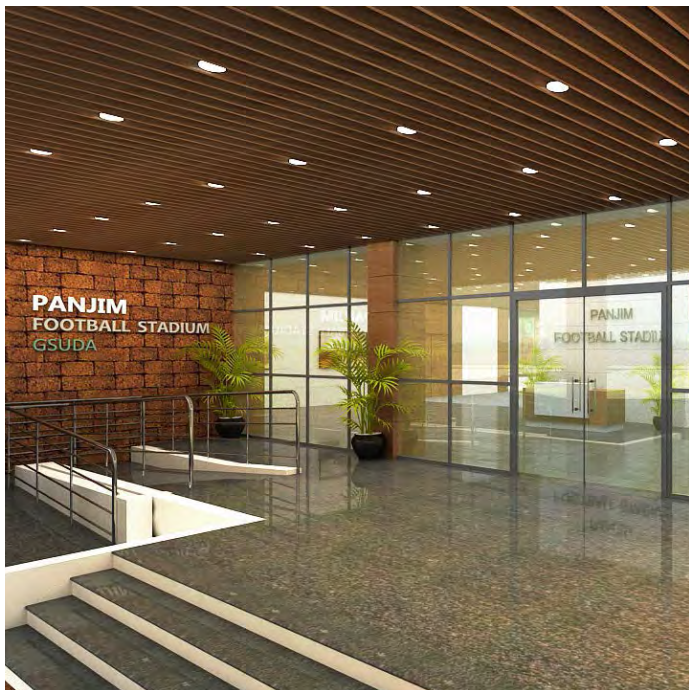


# CAMPAL FOOTBALL STADIUM GOA

<b>Client</b>	Goa State Urban Development Agency (GSUDA)
<b>Project Location</b>	8 Acres / 9000 Spectators
<b>Development Area</b>	100,000 Sft.
<b>Project Cost</b>	INR 40 Cr
<b>Status</b>	On-going
<b>Scope</b>	Detailed Project Report Masterplanning & Programming Architecture & Engineering Project Management

The Society for Applied Microwave Electronics Engineering & Research (SAMEER) is a premier research institute with main campus located within IIT, Powai and Satellite campus in Kharghar. Working closely with the infrastructure and faculty, the program was developed for providing additional research and housing facilities. This included a new Hostel for Research Scientists with Library and Recreation spaces and Faculty housing with provision for future expansion. A new Facility building has been developed with Assembly areas, Research labs, Training centers and residential accommodation at the Kharghar campus.

SPORTS







## INFRASTRUCTURE FOR SPORTS AUTHORITY OF INDIA

<b>Client</b>	Sports Authority of India (SAI)
<b>Project Site</b>	KSSR, New Delhi, Gwalior, Bhopal, Sonapat, Rohtak, Shilaroo and Patiala.
<b>Project Cost</b>	INR 400 Cr
<b>Status</b>	On-going
<b>Scope</b>	Detailed Project Report Masterplanning & Programming Architecture & Engineering Project Management

The project involves, assessing the needs of various SAI campus with respect to their future requirements and develop long term Masterplan for each of the center to create Olympic Standard Facilities for various sports. The Centre of Excellence for each of the sports will include State-of-Art Training facilities, Fitness and recovery areas, AV Rooms, Coach and Trainers facilities etc.. The project also involves creating modern day hostel facilities for athletes, meeting long-term and short-term stay requirements with supporting kitchen and dining facilities. The project includes facilities at KSSR-New Delhi, LNIPE -Gwalior, NCOE-Bhopal, NCOE -Sonapat and Rohtak, HATC -Shilaroo and the premier National Institute of Sports in Patiala.

SPORTS







## 36<sup>TH</sup> NATIONAL GAMES GOA

<b>Client</b>	Sports Authority of Goa
<b>Site Location</b>	Campal & Ponda
<b>Development Area</b>	120,000 Sft.
<b>Status</b>	Completed – Jan 2020
<b>Project Cost</b>	INR 44 Cr.
<b>Scope</b>	Detailed Project Report Masterplanning & Programming Architecture & Engineering Project Management Consultancy

SPORTS

Collage Design is one of the teams working with the Sports Authority of Goa to develop the venues for hosting this prestigious event in the State. The project includes venues for Boxing, Table Tennis, Lawn tennis, Taekwondo & Judo. Designed with a clear vision for the Legacy use, each facility will meet the highest standards of the respective federation guidelines. The facility along the Mandovi River will become a new icon for city with a new riverfront promenade for the residents. In addition to the sporting venues, the firm is designing the new office for the Sports Authority of Goa and Youth Affairs. Blending into the landscape, the two departments are connected with an atrium and share common amenities and seminar halls.







## 38<sup>TH</sup> NATIONAL GAMES UTTARAKHAND

<b>Client</b>	Directorate of Sports, Govt. of Uttarakhand
<b>Status</b>	Completed – Oct 2016
<b>Project Cost</b>	INR 900 Cr.
<b>Scope</b>	Feasibility Report Detailed Project Report Masterplanning & Programming Architecture & Engineering Financial Advisory Branding

SPORTS / MASTERPLANNING

The Detailed Project Report has been developed in close coordination with the State and Indian Olympic Association to deliver a robust plan for the state to host the games successfully and have a lasting legacy of sports infrastructure and passion. Spread across the Kumaon and Garhwal region of the state, the Games will be held primarily in the cities of Dehradun and Haldwani with multiple smaller venues spread across the state. The match venues and training facilities have been designed to the highest standards of compliance with the federation guidelines. The integrated effort of financial feasibility, Branding and Infrastructure planning has resulted in a successful road map for the games.







## 38<sup>TH</sup> NATIONAL GAMES MEGHALAYA

<b>Client</b>	Hindustan Steelworks Construction Limited.
<b>Seating Capacity</b>	10000 Outdoor + 3000 Indoor
<b>Project Cost</b>	INR 450 Cr
<b>Status</b>	On-going
<b>Scope</b>	Detailed Project Report Masterplanning & Programming Architecture & Engineering Project Management

Laying road map for preparation and development of sports infrastructure required to host upcoming National Games, in collaboration with State Sports bodies, Indian Olympic Association and other key stakeholders . The scope includes all venues shortlisted in the cities of Tura and Shillong to host National Games in the State The main venue in Shillong at JLN Stadium involves the upgradation of main stadium and an Indoor Sports Complex with roof top gardens and public amenities. The main venue in Tura includes a Football Stadium meeting FIFA standards for International events, Indoor Sports Complex with Swimming Pool, Basketball and Badminton courts with Fitness Centre and recreational facilities.

SPORTS







# RANGASALA STADIUM POKHARA, NEPAL

Client	Great SportsTech Limited (for National Sports Council, Nepal)
Site Area	53 Acres
Development Area	500,000 Sft.
Seating Capacity	20000
Status	Completed – Dec 2019
Project Cost	INR 80 Cr
Scope	Detailed Project Report Masterplanning & Programming Architecture and Engineering Project Management Consultancy

SPORTS

The Rangasala Football & Athletic Track Stadium was inaugurated on schedule for the Opening Ceremony of the 2019 South Asian Games, held from 1st to 10th December 2019. The Project includes a Football stadium with Class One athletic track, football field with FIFA guidelines, 20,000 modular seating including VIP & VVIP Seats, public utilities and Pre-Engineered facility building, The Project was designed to meet the highest standards of structural safety in this high earthquake zone while maintaining the elegance and blending into the landscape.







## DISABILITY SPORTS CENTRE GWALIOR

<b>Client</b>	Ministry of Social Justice & Empowerment
<b>Site Area</b>	15 Acre
<b>Development Area</b>	30000 Sqm
<b>Project Cost</b>	INR 135 Cr
<b>Status</b>	Completed – March 2019
<b>Scope</b>	Detailed Project Report Masterplanning & Programming Architecture & Engineering

SPORTS / MASTERPLANNING

Launched as India's first Private-Public Stadium, the stadium has been awarded the prestigious David Vickers Award – New Venue of Year 2015. Working closely with the clients, the stadium has been designed to meet the standards of ICC & FIFA for hosting international events. The outdoor stadium offers seating for 50,000 seats with private suite boxes and VIP business seats for both cricket and football. The design of the stadium venue reflects local architectural influences, recalling a proud past while serving as a bridge to a modern era. Media, broadcast and operation facilities have been integrated into the design. The facility has state-of-the-art amenities including restaurants, retail, banquet halls and conference rooms to provide a year around destination.





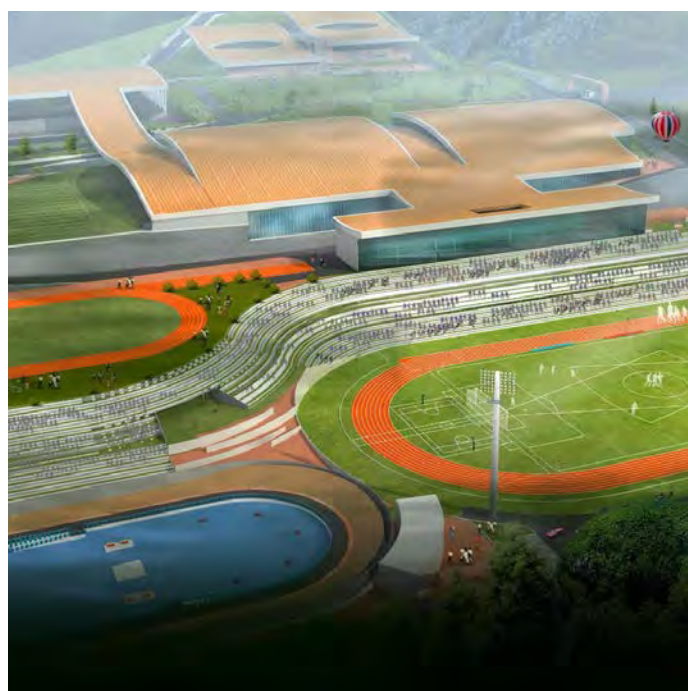


## DISABILITY SPORTS CENTRE SHILLONG

<b>Client</b>	Ministry of Social Justice & Empowerment
<b>Development Area</b>	700,000 Sft
<b>Project Cost</b>	INR 200 Cr
<b>Status</b>	On-going
<b>Scope</b>	Detailed Project Report Masterplanning & Programming Architecture & Engineering

SPORTS / MASTERPLANNING

In continuation of our engagement for development of training and competition facilities for Athletes with disability, the Shillong centre has been planned to also act as the Main Venue for the National Games scheduled in 2022. Spread across 50 Acres, the Masterplan in this hilly terrain has been carefully developed to provide accessibility to all parts of the site with multiple points for rest and social interaction. The Main Athletic Stadium with seating capacity of 25000 is built into the Natural contour of the site with Training tracks and support facilities. The Indoors Sports complex, Aquatic Centre, Tennis Complex and Archery Centre form a part of this residential sports complex. The Buildings and Landscape has been developed to respond to the challenges faced by the Athletes with visual impediment.







## KARYAVATTOM CONVENTION & CLUB HOUSE, KERALA

<b>Client</b>	ITUAL (for ILFS / Govt. of Kerala)
<b>Development Area</b>	150,000 Sft.
<b>Status</b>	Completed – March 2016
<b>Project Cost</b>	INR 85 Cr.
<b>Scope</b>	Detailed Project Report Masterplanning & Programming Architecture & Engineering Project Management Consultancy

Developed as part of Stadium Complex, the Club House and Convention centre is integrated into the Masterplan to create a cohesive complex of sports and entertainment. The complex includes facilities for banqueting, conventions and exhibition along with a hotel. Located on a steeply sloped portion of the site, the design blends into the landscape to create exciting vistas and circulation for the patrons. The Indoor Sports Hall is capable of hosting International tournaments with spectator seating, locker rooms and warm-up areas. The swimming pool complex includes an indoor recreational pool and an Olympic size outdoor pool with deck areas and spectator seating has the ability to host National tournaments and cater to the needs of the hotel guests and club members.

SPORTS







# RTSVM INTERNATIONAL SPORTS COMPLEX, NAVI MUMBAI

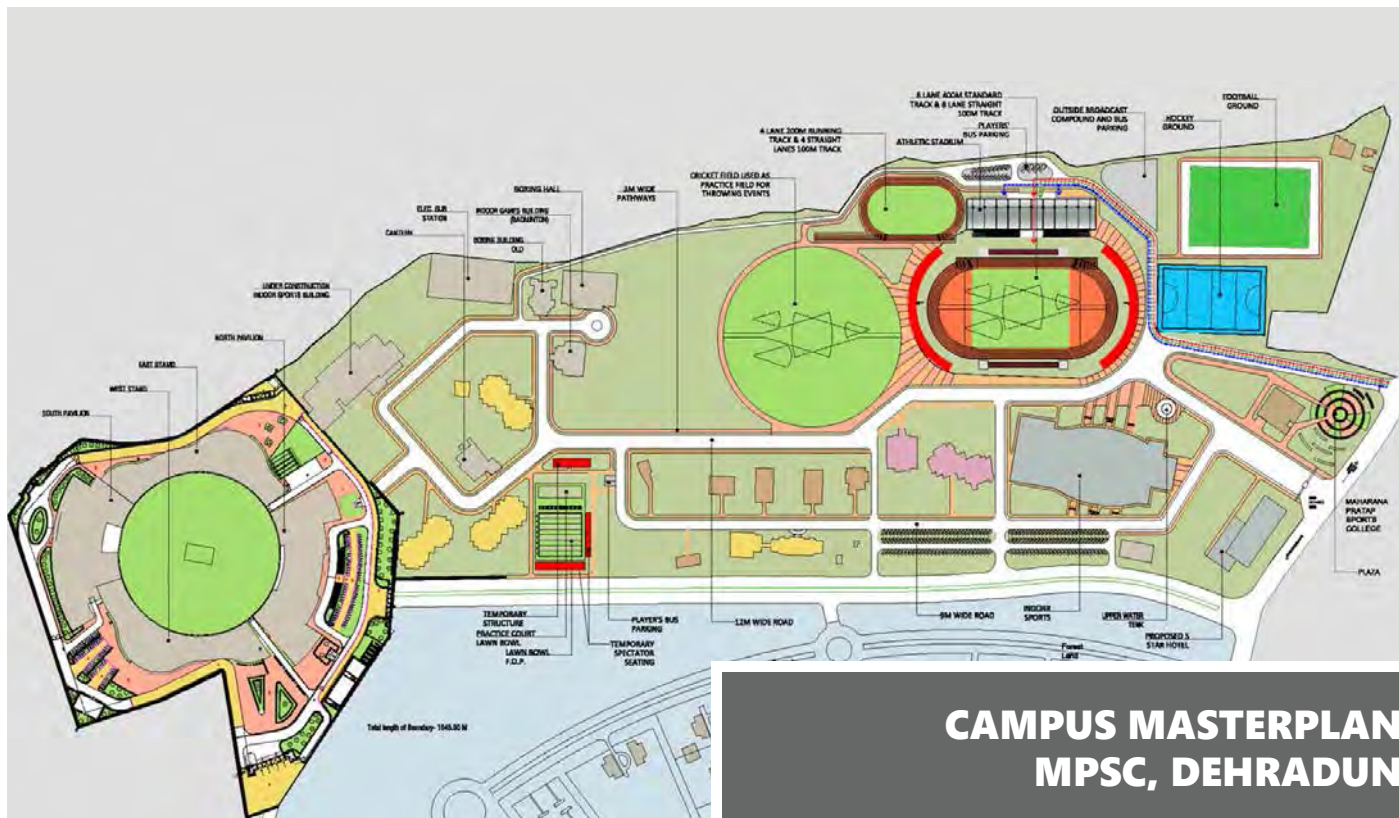
Client	R.T.S.V.M. (Ramseth Thakur Sarvajanic Vikas Mandal)
Site Area	17 Acres
Development Area	155,000 Sft.
Status	Completed – May 2012
Project Cost	INR 60 Cr.
Scope	Detailed Project Report Masterplanning & Programming Architecture & Engineering

SPORTS / MASTERPLANNING

Spread over 17 Acres in Ulwe, the Sports complex was developed as a means to engage the youth in the region. The program was developed to have a mix of recreational and professional sports with indoor and outdoor play areas. The rock climbing wall in the atrium lobby activates the space and starts to engage the visitors. The indoor sports hall for badminton meets the standards for hosting State and National level tournaments with ample space for training. Squash, Table tennis and Billiards are the other indoor sports planned to provide training for participation in National and International tournaments. The elevated pool with parking below and adjacent locker rooms provides a relief the building volume with an elevated deck for recreational activities.







## CAMPUS MASTERPLAN MPSC, DEHRADUN

<b>Client</b>	Directorate of Sports, Govt. of Uttarakhand
<b>Site Area</b>	110 Acres
<b>Status</b>	Completed – Oct 2016
<b>Project Cost</b>	INR 74 Cr.
<b>Scope</b>	Detailed Project Report Masterplanning & Programming

SPORTS / MASTERPLANNING

As part of the planning and development for hosting the National Games, the Maharana Pratap Sports College was identified as the Main Venue for opening and closing ceremonies in addition to 8 sporting events. The sports college has been planned to create a games friendly campus to receive nearly 3000 Athletes and have a lasting legacy for the future. Public plazas and gardens have been created by separating the movement of players and emergency vehicles from the pedestrians. The Athletic stadium, Shooting range and other indoor and outdoor training and match venues are integrated into the Masterplan for ease of operation.







## SANDIP FOUNDATION SPORTS COMPLEX, NASHIK

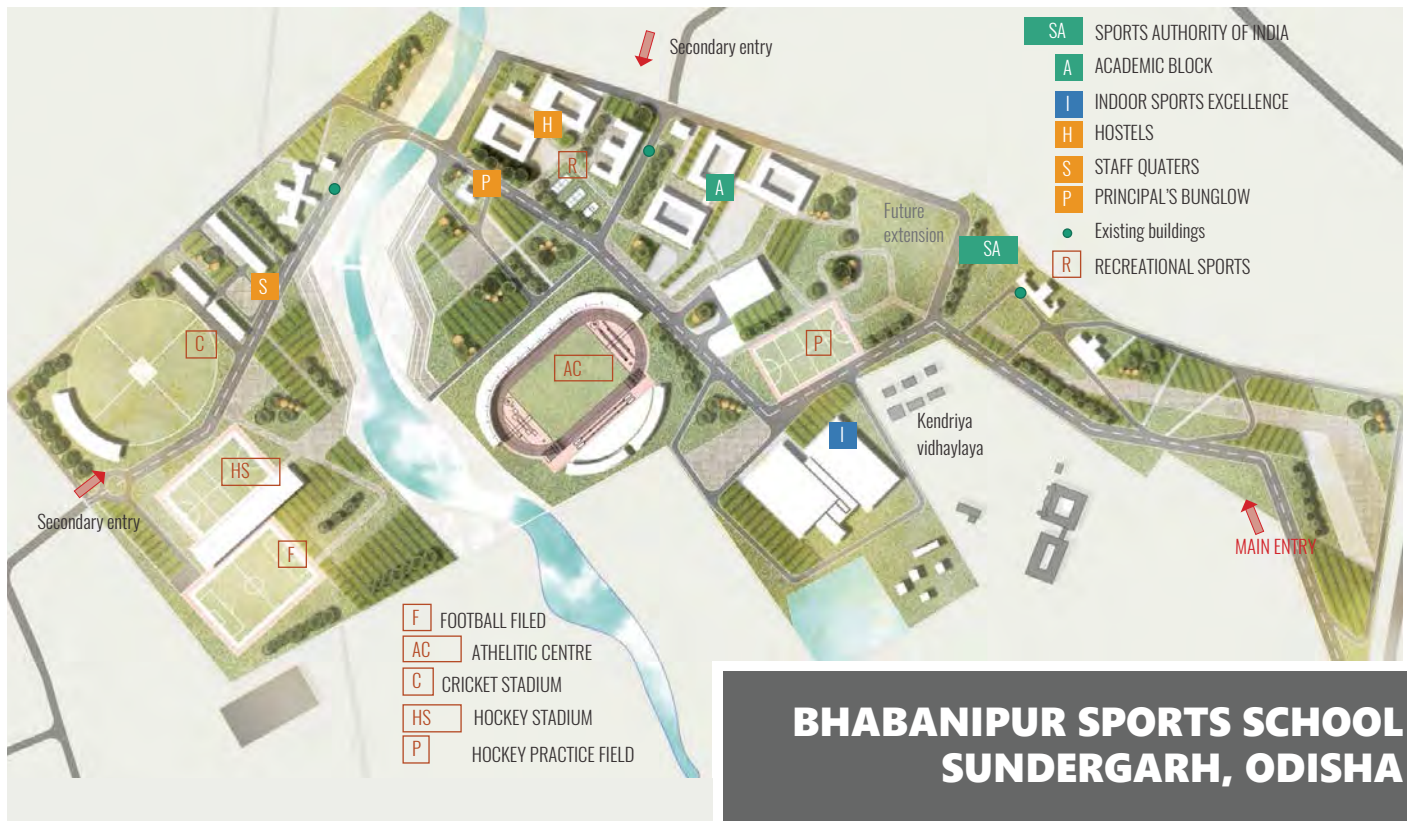
<b>Client</b>	Sandip Foundation
<b>Project Location</b>	Nashik, Maharashtra
<b>Development Area</b>	100,000 Sft
<b>Project Cost</b>	INR 60 Cr
<b>Status</b>	On-going
<b>Scope</b>	Detailed Project Report Masterplanning & Programming Architecture & Engineering Project Management

SPORTS / MASTERPLANNING

Sandip University at Nashik needed to expand and renovate its sports infrastructure in order to relieve increasing demands on campus sports facilities while also bolstering student recruitment and retention. The university realized this need as an opportunity to create an integrated Sports Masterplan that could also serve as a dynamic focal point on campus. The Sports Infrastructure will play a key role in this evolution by introducing numerous features never before available on campus including swimming pool, squash courts, gymnasium, gym, expansive weight/fitness areas, a multiuse activity court, outdoor artificial track, football and cricket field. The facility will create a meaningful connection to the existing buildings, characterized by a robust podium and jogging track that connects students to the key fitness spaces and offering striking views of the pool, campus and mountainside.







## BHABANIPUR SPORTS SCHOOL SUNDERGARH, ODISHA

<b>Client</b>	District Mineral Foundation, Odisha
<b>Site Location</b>	100 Acres
<b>Project Cost</b>	INR 120 Cr
<b>Status</b>	On-going
<b>Scope</b>	Detailed Project Report Masterplanning & Programming Architecture & Engineering Project Management

MASTERPLANNING / SPORTS

Spread across 100 Acres, it is one of a kind Sports School planned to promote Sports and develop the future Athletes of the country. The Masterplan is developed with three distinct areas for education, residential and sports amenities with connecting walkways and plazas. The Sports Facilities are planned to meet the International federation standards and host national level tournaments, The Educational facilities are planned around the courtyards to provide natural light and ventilation to the classrooms and common areas for social interaction.







# REDEVELOPMENT OF KALINGA SPORTS COMPLEX, ODISHA

Client	Odisha Industrial Infrastructure Development Corporation (IDCO)
Site Area	105 Acres
Project Cost	INR 100 Cr
Status	On-going
Scope	Detailed Project Report Masterplanning & Programming Architecture & Engineering Project Management

MASTERPLANNING / SPORTS

The project involves the Redevelopment of the Iconic Kalinga Sports Complex in Bhubaneswar by identifying additional infrastructure required and beautification of the campus to host International events. Working closely with the clients and other Stake holders, the team developed various projects across the campus including the expansion of the Hockey Stadium by providing new stands and creating amenities to host World Cup events. Sports Hostels to meet the growing need of the Athlete population to train in this campus have been planned to match 4 Star hotel facilities with all support amenities.







# CURCHOREM SPORTS COMPLEX GOA

<b>Client</b>	Goa State Infrastructure Development Corporation (GSIDC)
<b>Site Area</b>	8 Acres
<b>Development Area</b>	110,000 Sft.
<b>Project Cost</b>	INR 60 Cr
<b>Status</b>	On-going
<b>Scope</b>	Detailed Project Report Masterplanning & Programming Architecture & Engineering Project Management

SPORTS

A thoughtfully laid out Masterplan for this community and training complex includes a series of indoor and outdoor spaces connected by bridges and lounges. An indoor pool with dedicated locker rooms along with the outdoor swimming and diving pools has been designed as an High Performance Centre for competitive training. Indoor sports facilities including Cricket, Badminton, Basketball, Squash and Table tennis are designed for recreational, training and competitive events with seating and compliance with the Sports Federations. Landscaped roof gardens with rock climbing walls make this a community destination. Multipurpose halls for events and exhibitions are integrated into the program for revenue generation and promotion of local art and culture.







# MULTI SPORTS COMPLEX JABALPUR

Client	Jabalpur Municipal Corporation
Development Area	300,000 Sft.
Project Cost	INR 35 Cr
Status	On-going
Scope	Detailed Project Report Masterplanning & Programming Architecture & Engineering Project Management

Located in the heart of the city, the Multi-purpose sports complex is spread across 10 Acres with Athletic Stadium of 5000 capacity, Football field and Indoor Sports complex.. The project involved the redevelopment of the project site to allow for the sports and commercial activity to function independent of each other. The Indoor Sports complex is planned vertically to also act as the Pavilion building for the Athletic Stadium. The Indoor sports include badminton courts, squash courts, Table tennis and board games, multipurpose halls for combat training and supporting amenities.

SPORTS / COMMERCIAL







## SUSHANT ZONAL SPORTS COMPLEX, GOLF CITY, LUCKNOW

<b>Client</b>	Ansal API
<b>Site Area</b>	20 Acres
<b>Development Area</b>	150,000 Sft
<b>Project Cost</b>	INR 80 Cr
<b>Status</b>	On-going
<b>Scope</b>	Detailed Project Report Masterplanning & Programming Architecture & Engineering Project Management

The project involves the Redevelopment of the Iconic Kalinga Stadium by identifying additional infrastructure required and beautification of the campus to host International events. Working closely with the clients and other Stake holders, the team developed various projects across the campus including the expansion of the Hockey Stadium by providing new stands and creating amenities to host World Cup events. Sports Hostels to meet the growing need of the Athlete population to train in this campus have been planned to match 4 Star hotel facilities with all support amenities.

SPORTS





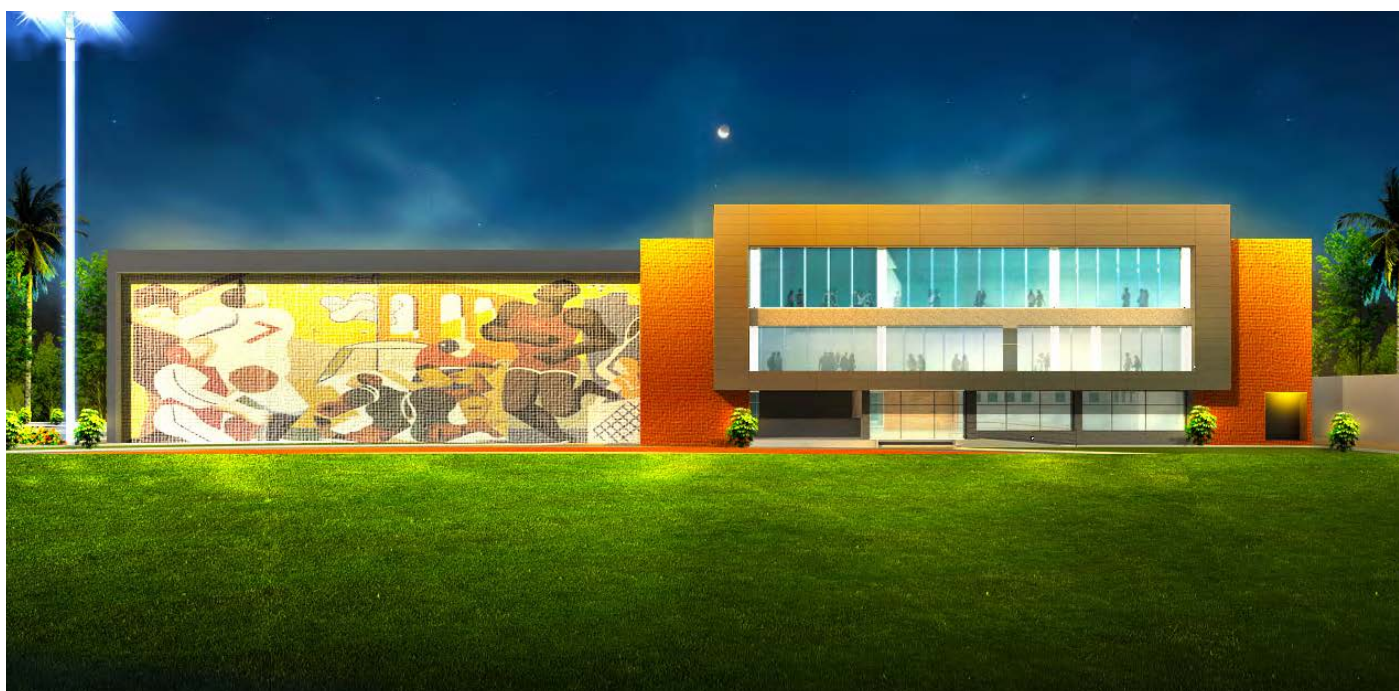


## DISTRICT SPORTS COMPLEX HALDWANI, UTTARAKHAND

<b>Client</b>	UPRNN (for Govt. of Uttarakhand)
<b>Site Area</b>	4 Acres
<b>Development Area</b>	45,000 Sft.
<b>Status</b>	Completed – June 2017
<b>Project Cost</b>	INR 14 Cr.
<b>Scope</b>	Detailed Project Report Masterplanning & Programming Architecture & Engineering Project Management Consultancy

SPORTS

Elegant and refined language of the façade creates a visual relief along the busy Highway with the iconic clock tower. The program for this district sports complex was envisaged to provide the residents with a place to play and train. The Badminton and Squash courts are designed to host the National Games and comply with the Sports Federation guidelines. Fitness centre, reading rooms and other social spaces distributed in the atrium make this compact building efficient and functional. Local material and sustainable design will make this building comply with the GRIHA ratings and keep the operational costs down. Sports Hostel, Athletic tracks, cricket pitches, football and boxing facilities make this a comprehensive complex for the region.







## DISTRICT SPORTS COMPLEX SUNDERGARH, ODISHA

<b>Client</b>	District Mineral Foundation, Odisha (DMF)
<b>Project Cost</b>	INR 25 Cr
<b>Status</b>	On-going
<b>Scope</b>	Detailed Project Report Masterplanning & Programming Architecture & Engineering Project Management

SPORTS

Planned as a community Sports Complex, the project components include development of Cricket Ground, Athletic Stadium, Football grounds, Indoor Sports Halls and Commercial Facilities. The Masterplan has been developed to provide the community with international standard facilities for training and recreation. The site will continue to be used for communal events throughout the year.



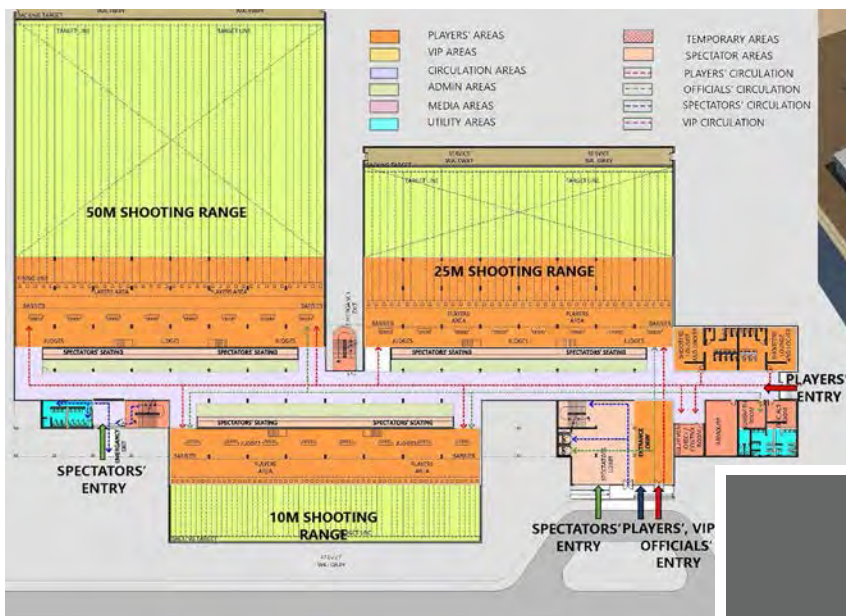
## RANDHIR PRASAD VERMA STADIUM, DHANBAD

<b>Client</b>	Dhanbad Municipal Corporation
<b>Project Cost</b>	INR 10 Cr
<b>Status</b>	On-going
<b>Scope</b>	Detailed Project Report Masterplanning & Programming Architecture & Engineering Project Management

SPORTS / COMMERCIAL

Planned as a community Sports Complex, the project components include Jogging track, Football Field, Cricket practice nets, Tennis, Volleyball & Kabaddi fields, Children play area, Outdoor Gym and meditation areas. The Masterplan has been developed to provide the community with international standard facilities for training and recreation.





## INDOOR SHOOTING RANGE DEHRADUN

<b>Client</b>	UPRNN (for Govt. of Uttarakhand)
<b>Development Area</b>	65,000 Sft.
<b>Status</b>	Completed – June 2017
<b>Project Cost</b>	INR 34 Cr.
<b>Scope</b>	Detailed Project Report Masterplanning & Programming Architecture & Engineering

The new Indoor Shooting Range developed in the MPSC Campus meets the highest safety and federation standards for hosting National and International events. The Shooting range includes 60 lanes for 10M range, 60 lanes for 25M range and 40 lanes for 50M. The design of the shooting venue was driven by the desire to evoke an experience of flow and precision inherent in the shooting sport through clean lines, defined circulation corridors and uninterrupted viewing angles for the spectators.

SPORTS



## PARADE GROUND SPORTS COMPLEX, DEHRADUN

<b>Client</b>	UPRNN (for Govt. of Uttarakhand)
<b>Site Area</b>	11 Acres
<b>Development Area</b>	50,000 Sft.
<b>Status</b>	Completed – June 2017
<b>Project Cost</b>	INR 15 Cr.
<b>Scope</b>	Detailed Project Report Masterplanning & Programming Architecture & Engineering

Located in the heart of the city, this new indoor and outdoor sports complex is planned for meeting the training and recreational needs of the city. The indoor complex blends with the outdoor sports fields for tennis, basketball and volleyball by integrating seating and support facilities into the building. Large indoor halls with seating for hosting National and International events will cater to badminton, basketball, volleyball, boxing and judo. The challenging site conditions have been skillfully addressed through multiple entry and exit locations with secure circulation spaces and spectator amenities.

SPORTS





## IGMC STADIUM VIJAYAWADA

<b>Client</b>	Vijayawada Municipal Corporation
<b>Project Cost</b>	INR 75 Cr
<b>Status</b>	On-going
<b>Scope</b>	Detailed Project Report Masterplanning & Programming Architecture & Engineering Project Management

SPORTS / COMMERCIAL

The project involves the upgradation of Athletic Stadium to comply with the International standards for large sporting and cultural events, as directed by the Sports Department of Andhra Pradesh. The original stadium structure will be maintained and additional seating with Roof has been planned. The commercial development around the stadium will generate revenue towards the stadium operations and maintenance.



## BADDA DADA SPORTS COMPLEX, JABALPUR

<b>Client</b>	Jabalpur Smart City Limited
<b>Project Cost</b>	INR 26 Cr
<b>Status</b>	On-going
<b>Scope</b>	Detailed Project Report Masterplanning & Programming Architecture & Engineering Project Management

SPORTS

Planned as a community Sports Complex, the project component includes Cricket ground, Half Olympic Size Swimming Pool and Outdoor Sports Facilities under Smart City initiative. The Masterplan has been developed to provide the community with international standard facilities for training and recreation.





## INDIAN CRICKET LEAGUE

<b>Client</b>	Essel Sports Pvt. Ltd., Mumbai
<b>Site Locations</b>	Hyderabad, Panchkula, Gurgaon and Ahmedabad
<b>Status</b>	Completed – Oct 2010
<b>Project Cost</b>	INR 34 Cr.
<b>Scope</b>	Detailed Project Report Masterplanning & Programming Architecture & Engineering Consultancy Project Management

SPORTS

The new cricket league established by Essel Sports was planned as a bi-annual International event across the country. The venues were carefully selected and upgraded to meet ICC standards in short timelines. The design and construction was planned to achieve these aggressive timelines through use of modular seating and modified containers for technical facilities.



## CHOWGULE SPORTS CENTRE, GOA

<b>Client</b>	Chowgule College
<b>Development Area</b>	20,000 Sft.
<b>Status</b>	Completed – June 2009
<b>Project Cost</b>	INR 10 Cr.
<b>Scope</b>	Masterplanning & Programming Architecture & Engineering

SPORTS

Established as a Sports Training and Sports Medicine Centre, this compact facility is located inside the Chowgule College in Margao. The building is placed next to the artificial Football field with amenities to support the training of professional athletes. The iconic building is designed to meet sustainable guidelines and provide an atmosphere for excellence. The fitness centre and training hall are built to provide the state-of-art facility and equipment with indoor running tracks, recovery rooms, spa and treatment pools.



# INTERNATIONAL EXPERIENCE

Director, Ramkumar Subramanian worked on major Sports Infrastructure Project with some of the leading Architecture Firms in Los Angeles & New York.

## **ARQUITECTONICA**, NEW YORK. 2000 TO 2004

---

### **LONG ISLAND UNIVERSITY ATHLETIC COMPLEX, Brooklyn, NY**

100000 sq.ft Recreation center, program includes basketball courts, swimmingpool, offices and lockers

Role: Project Designer

---

### **IMG BHARATA SPORTS ACADEMY, Hyderabad, INDIA**

100000 sq.ft Recreation center, program includes basketball courts, swimmingpool, offices and lockers

Role: Project Designer

---

### **TEXAS A & M ARENA, Corpus Christi, TEXAS**

10000 seat basketball arena along the Gulf of Mexico

Role: Project Design

---

### **ESPANYOL SOCCER STADIUM, Barcelona, SPAIN**

45000 seat stadium with retail mall and offices

Role: Project Designer

---

### **ST.JOHN'S UNIVERSITY SPORT COMPLEX, Queens, NY**

2000 Seat soccer stadium, 25000 sq.ft recreation center and master plan for sports facilities on campus

Role: Project Designer, Site coordination

---

### **HUDSON YARDS, Manhattan, NY**

Masterplan for the westside of manhattan including studies for feasibility of 2012 Olympics

Role: part of the team responsible for individual building forms and zoning studies

---

### **METROSTARS SOCCER STADIUM, Harrison, NJ**

2000 Seat soccer stadium, 25000 sq.ft recreation center and master plan for sports facilities on campus

Role: Project Designer, Site coordination

---

### **WUSA SOCCER LEAGUE, USA**

Studies and implementation for this start up league to explore feasibility and to upgrade existing facilities in 8 cities with focus on NY and DC

Role: Project Design

---

### **NC State Sports Complex, Raleigh, NC**

Masterplan for sports facilities including soccer and baseball stadium

Role: Project Design

---

## **NBBJ**, LOS ANGELES & CINCINNATI, 1996 TO 2000

---

### **COLUMBUS CREW SOCCER STADIUM, Cincinnati, OH**

Studies and implementation for this start up league to explore feasibility and to upgrade existing facilities in 8 cities with focus on NY and DC

Role: Project Design

---

### **PAUL BROWN FOOTBALL STADIUM, Columbus, OH**

Masterplan for sports facilities including soccer and baseball stadium

Role: Project Design





CHEVY  
WE'LL BETHERE



SMITHSONIAN  
HEALTHSOUTH

Budweiser

Provident



## DIRECTOR' PROFILES

### NITIN CHAVARKAR, **Director**

Nitin studied Architecture in Mumbai at Sir JJ School of Architecture and co-founded the firm in 1996. He is constantly challenging and perfecting specifications of even the smallest aspects of the project, ensuring great detailing at every level that ensures high quality design. He has strong technical skills and his commitment to quality, solid research and perfection is a significant part of the DNA of Collage design.

### JAYSHIL PATEL, **Director**

Jayshil Patel studied Civil Engineering in Gujarat at Nirma Institute of Technology. He has more than 15 years of rich experience in Engineering & Project Management. Mr. Patel's proficiency lies in providing leadership and direction for Project strategy, execution and competitive service delivery in a fast changing environment. He has successful experience in projects complying with International cost effective standards of quality, safety & time.

### AMOL MAHAJAN, **Director**

Amal studied Architecture in Mumbai at Sir JJ School of Architecture and with more than 23 years in the field, he leads the design team. He is an architect of the curious, investigative kind. He prefers to approach architectural challenges with the attitude of an inventor and he finds his inspiration and gratification in technical innovation and experimenting with materials and forms and these are the characteristics he fosters in the firm's working.

### RAMKUMAR SUBRAMANIAN, **Director**

Ramkumar studied Architecture in Mumbai at Sir JJ School of Architecture with Amal and Nitin. Having worked with leading International design firms across USA and Europe, he has been involved in the planning, design and construction of landmark projects across the globe over the past 23 years. He has a very clear understanding of the technical and operational challenges involved in the planning and design of large-scale projects.

## THE TEAM

Sachin Dhanawade

Jacquina Fernandes

Suchita Jigjini

Vipul Kotkar

Sudhanshu Kotian

Dinesh Awate

Sushil Rane

Sanjay Kumar Yadav

Kavita Malgaonkar

Vinay Shinde

Uttam Vishwakarma

Bijal Dhruv

Pravin Lad

Umakant Gautam

Dnyaneshwar Kesarkar

Vijay Chaudhari

Lalit Joshi

Suchita Patil

Anil Mandrai

Yogesh Mane

Aditya Sovani

Mandar Mahajan

Mukund Navkar

Raju Jadhav

Chandrakant Lokhande

Ajay Dhumal

yogesh khedekar

Vishnu Karande

Anisha Raut

Akshay Kondhiya

Prajwal Patil

Ashwin Raul

Gargi Jathar

Mansi Dhurat

Shaily Mahera

Shraddha Gaonkar

Abdul Hameed Shaikh

Arjun Jadhav

Raju Lokhande

Sooraj Mahalgawey

Neelima Dharkar

Rupesh Bramhane

Manohar Palandurkar

Sandeep Bhor

sunil jangle

Ashok Dhenge

Jayesh Rajguru

Karna Kalyan Kumar

Nijamali Mulla

Nagesh Kinnarwar

Anam Fatima

Archana Shukla

Sandeep Kumar Paul

Rahul Rawat

Sheetal Saxena

Ratan Singh









ARCHITECTURE | INTERIORS | PMC  
[www.collagedesign.net](http://www.collagedesign.net)

COLLAGE DESIGN PVT. LTD  
300, Sai Sampanna, Station Rd  
Vikhroli East, Mumbai 400 083  
+91 22 2574 0842 / 43 / 44 / 45  
3/7, Gr. Floor, Sarvapriya Vihar  
Hauz Khas, New Delhi 110 016  
+91 11 4512 0207

